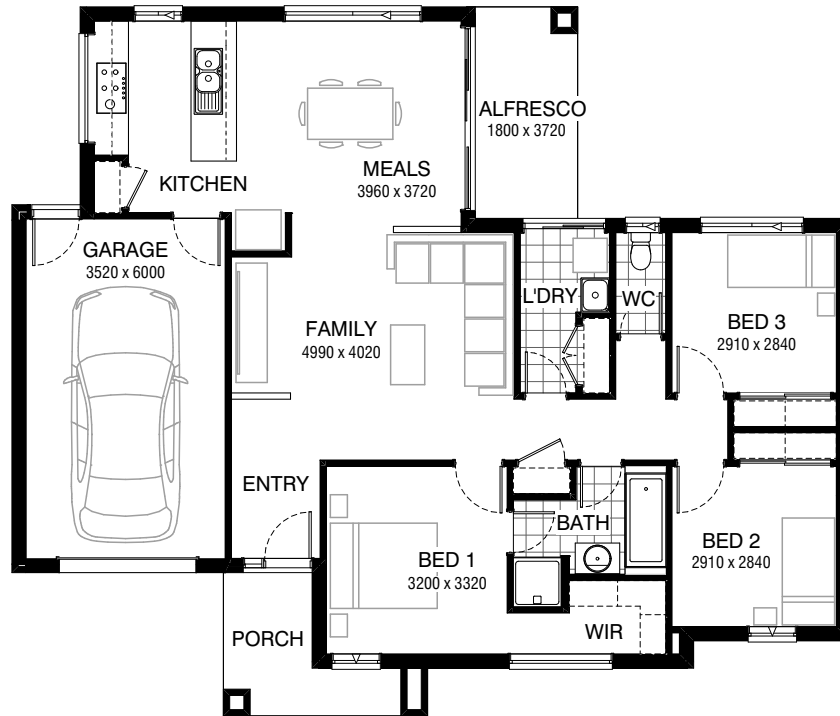


Total squares **15.6sq**



FLOORPLAN OPTIONS

All available ready-to-go floorplan options for this design can be viewed on the following pages, or visit www.burbank.com.au.

Facades available:

Drysdale, Arkley, Haring	
Dowd, Nolan	
Overall home width	14.75m
Overall home length	12.47m

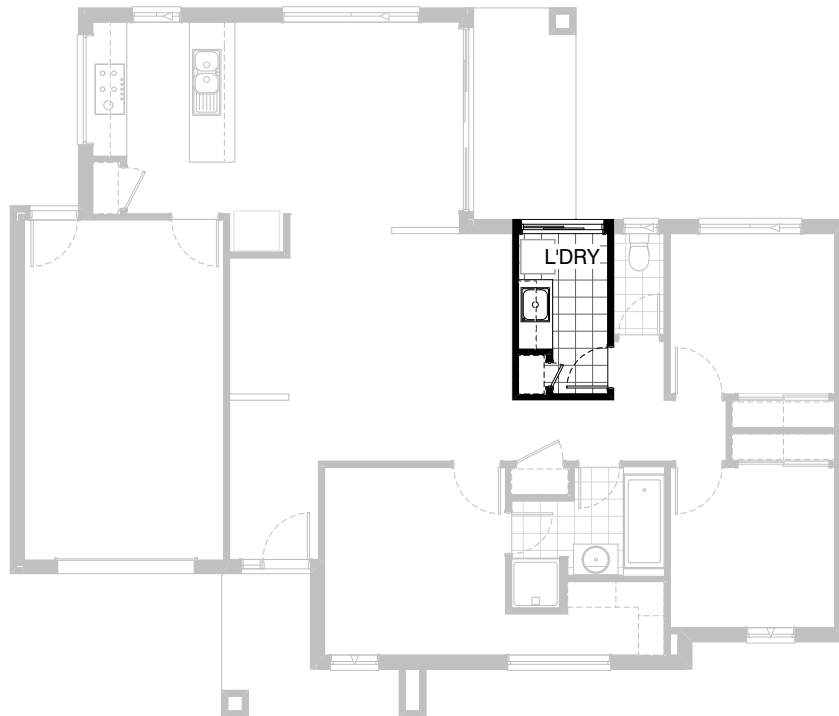
Residence	108.9m ²	11.7sq
Garage	23.7m ²	2.6sq
Porch	5.6m ²	0.6sq
Alfresco	6.7m ²	0.7sq
Total	144.9m²	15.6sq

Listed details based on Drysdale façade floorplan (illustrated)

*Copyright conditions. All photos and illustrations are representative only. Floor plans and specifications may be varied by Burbank without notice, the dimensions are diagrammatic only and a Building Contract with final drawings will display correct dimensions and detail. All designs are the property of Burbank and must not be used, reproduced, copied or varied, wholly or in part without written permission from an authorised Burbank representative. Copyright Burbank Australia Pty Ltd. ABN 91 007 099 872. Builders Registration Number CDB-U-52603.

Call 13 BURBANK
Visit burbank.com.au

FLOORPLAN OPTIONS



Option LD-1

Provide Laundry Upgrade by relocating laundry entry door & reduce size of linen cupboard, adjusting shelving to suit.

Provide 1no. 800mm base cabinet with S.S inset trough in 32mm laminated bench top,

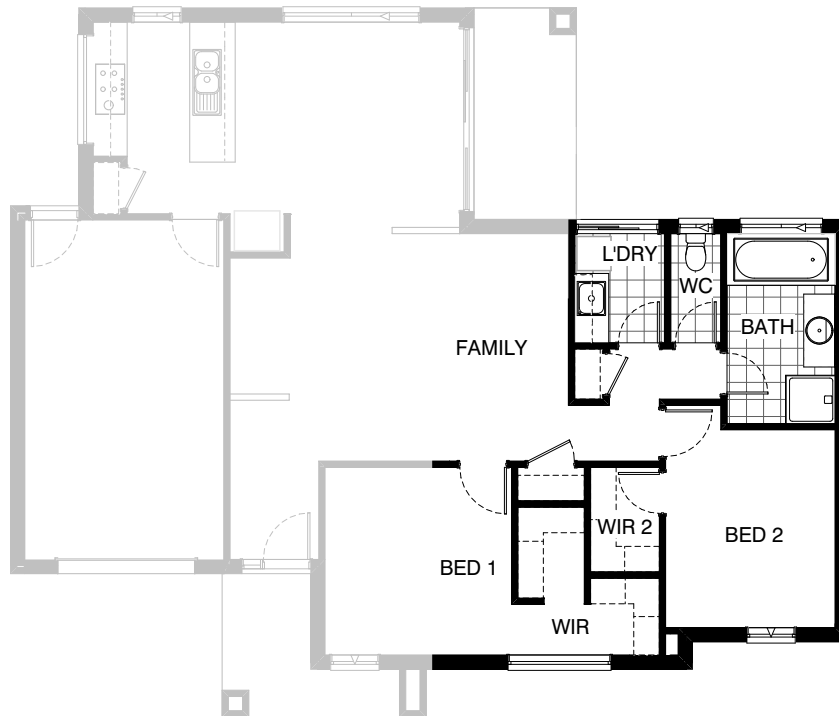
1no. 350mm base cabinet.

1no. 800mm cupboard cupboard.

1no. 350mm overhead cupboard.

Provide additional tiled splashback and bench top to suit.

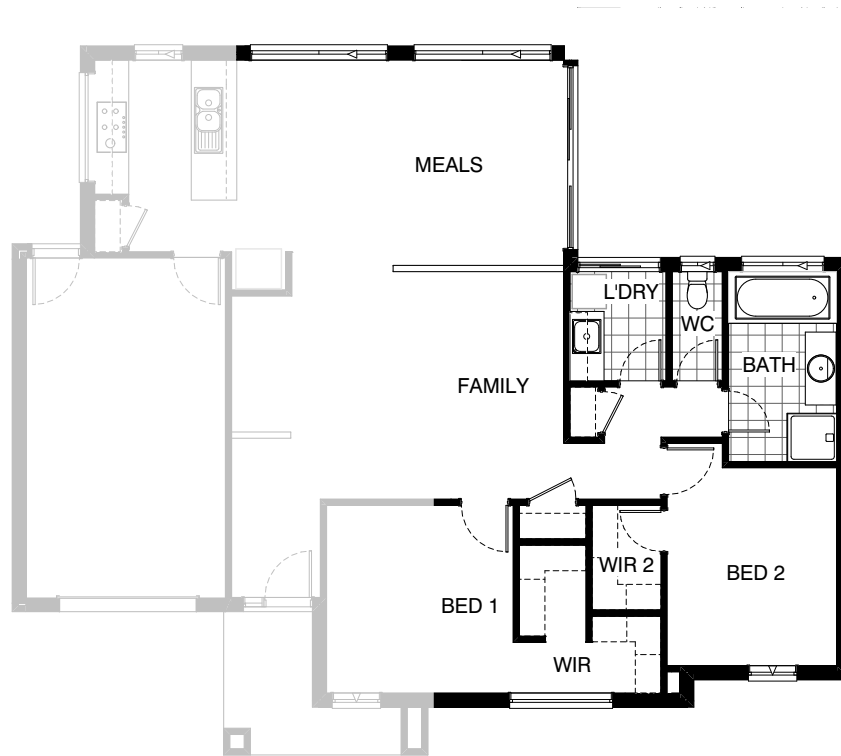
FLOORPLAN OPTIONS



Option IP1-1

- Provide alternative layout by deleting bedroom 3 and relocating bathroom & separate wc in lieu of standard.
- Provide 1no 1027mm x 610mm sliding window to WC & 1no. 1450mm x 1200mm aluminium sliding window to bathroom.
- Provide His / Hers WIR to bedroom 1 with shelving to suit.
- Increase the width of bedroom 2 by 90mm & remove built in robe and provide WIR 2.
- Relocate linen cupboard & laundry access to passage way
- Provide 1no. 800mm base cabinet with S.S inset trough in 32mm laminated bench top,
 - 1no. 350mm base cabinet.
 - 1no. 800mm cupboard cupboard.
 - 1no. 350mm overhead cupboard.
- Provide additional tiled splashback and bench top to suit.

FLOORPLAN OPTIONS

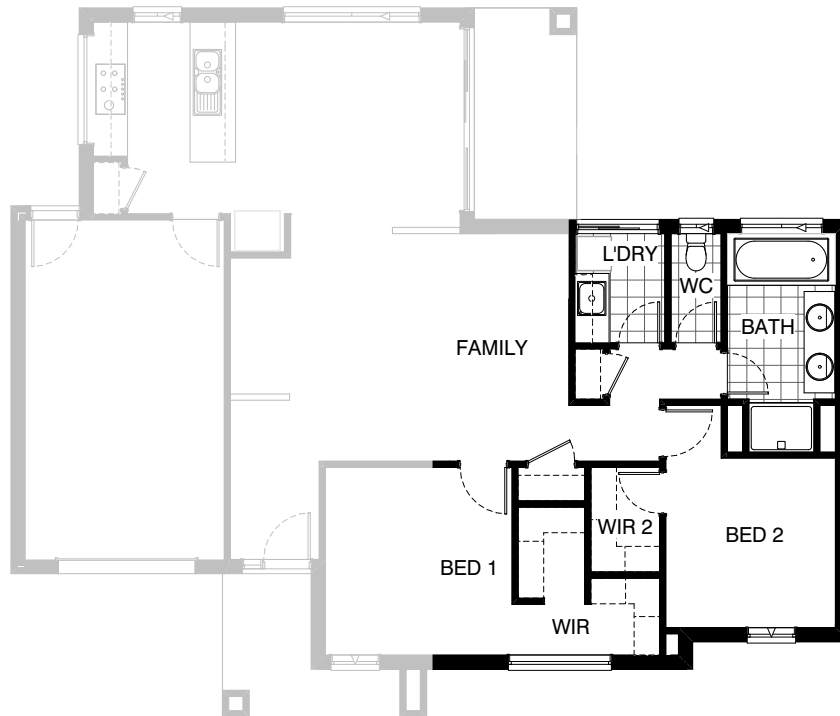


Option IP1-2

Provide alternative layout as per Option IP1-1 & delete alfresco and extend meals wall out by 1800mm.

Provide an additional 2410mm x 1200mm aluminium sliding window to meals area,
Extend low height wall to family / meals area & increase the width of laundry & Linen
cupboard out by 110mm over option IP1-1.

FLOORPLAN OPTIONS

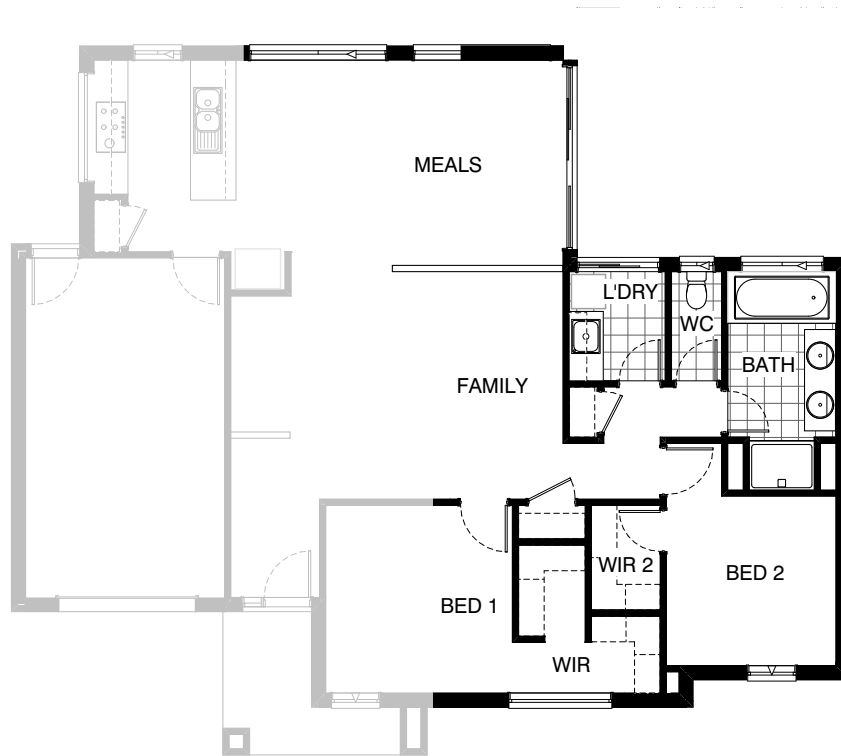


Option IP1-3

Provide alternative layout as per IP1-1 & reconfigure bathroom layout by
Providing 2no. basins with 1782mm vanity unit in lieu of standard,
1no. 900mm x 1200mm polymarble shower base in lieu of standard.
Reduce bedroom 2 length by 500mm over IP1-1 option.

FLOORPLAN OPTIONS

 **3**  **1**  **1**



Option IP1-4

Provide alternative layout as per IP1-2 & reconfigure bathroom layout by
 Providing 2no. basins with 1782mm vanity unit in lieu of standard,
 1no. 900mm x 1200mm polymarble shower base in lieu of standard.
 Reduce bedroom 2 length by 500mm over IP1-2 option.